

Splice Connectors

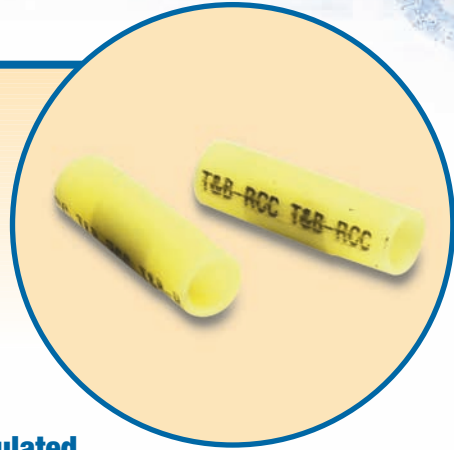
Splices

Butt Splices

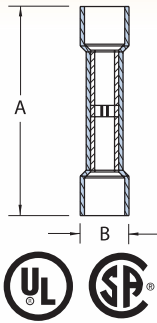
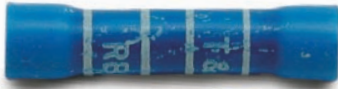
- Wires are butted together and crimped at each end of the splice
- Available either non-insulated or insulated with nylon or PVC
- Nylon insulated splices meet or exceed the requirements of MIL-T-7928
- Color-coded according to wire size

Parallel Splices

- Wires are laid side by side in the connector, and the connection is made in one crimp
- Offer advantages in simplicity of installation and small size
- One crimp completes the splice

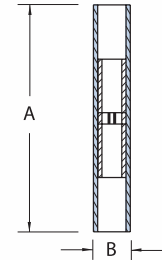


Vinyl-Insulated Splices — Butt Type — Expanded Insulation



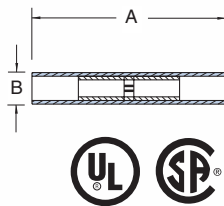
CAT. NO.	PKG. QTY.	WIRE RANGE	MAX. INS.	REC. TOOL	DIMENSIONS	
					A	B
2RA18X	100	22-18	.170	ERG2001	1.13	.25
RAA217-170	1,000	22-18	.170		1.13	.25
RAA217	1,000	22-18	.155		1.13	.23
2RB14X	100	16-14	.200		1.13	.26
RBB217-200	1,000	16-14	.200		1.13	.26
RBB217	1,000	16-14	.180		1.13	.23
2RC10X	50	12-10	.250		1.31	.31
RCC217-250	500	12-10	.250		1.31	.31
RCC217	1,000	12-10	.210		1.31	.29

Nylon-Insulated Aircraft Splices



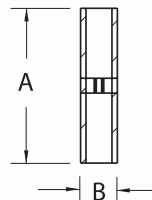
CAT. NO.	PKG. QTY.	WIRE RANGE	REC. TOOL	DIMENSIONS	
				A	B
2RZZ	50	26-22	WT1452	1.22	.15
2RAA	50	22-18	ERG2001	1.52	.25
RAA23	500	22-18		1.52	.25
2RBB	50	16-14		1.52	.28
RBB23	500	16-14		1.52	.28
2RCC	25	12-10		1.54	.35
RCC23	250	12-10		1.54	.35

Nylon-Insulated Butt Splices



CAT. NO.	PKG. QTY.	MAX INS. DIA.	WIRE RANGE	REC. TOOL	DIMENSIONS	
					A	B
2RA18	100	.115	22-18	ERG2001	1.19	.18
RAA21	1,000	.115	22-18		1.19	.18
2RB14	100	.148	16-14		1.19	.21
RBB21	1,000	.148	16-14		1.19	.21
2RC10	50	.210	12-10	TBM6S	1.26	.28
RCC21	500	.210	12-10		1.26	.28
2RD8	25	.340	8	TBM6S	1.69	.36
RDD27	200	.340	8		1.69	.36
2RE6	20	.420	6		1.85	.45
REE28	200	.420	6		1.85	.45
2RF4	15	.510	4		1.85	.52

Tefzel®-Insulated Butt Splice

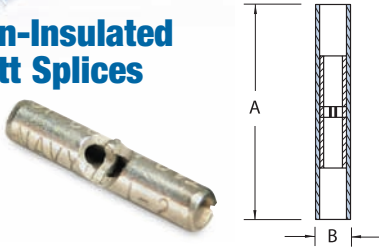


CAT. NO.	PKG. QTY.	WIRE RANGE	MAX. INS. DIA.	REC. TOOL	DIMENSIONS	
					A	B
RAAT21	1,000	22-18	1.22	WT145C	.115	—
RBBT21	1,000	16-14	1.22		.148	—
RCCT21	1,000	12-10	1.22		.210	—

Tefzel® is a registered trademark of DuPont.

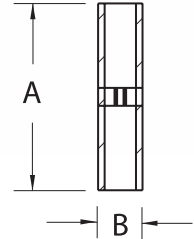
Splice Connectors

Non-Insulated Butt Splices



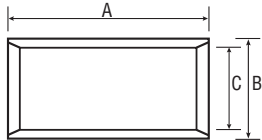
CAT. NO.	PKG. QTY.	WIRE RANGE	REC. TOOL	DIMENSIONS	
				A	B
2A-18	100	22-18	EGR2002	.62	.12
AA2	1,000	22-18		.62	.12
2B-14	100	16-14		.62	.16
BB2	1,000	16-14		.62	.16
2C-10	50	12-10		.72	.22
CC2	500	12-10	TBM6S	.72	.22
2D-8	25	9-8-7		1.03	.28
DD102	200	9-8-7		1.03	.28
2E-6	20	6-5		1.12	.37
EE2	200	6-5		1.12	.37
2F-4	15	4-3		1.25	.44
FF2	200	4-3		1.25	.44
2G21	5	2-1		1.72	.55
GG2	25	2-1		1.72	.55

Nylon-Insulated Parallel Splices



CAT. NO.	PKG. QTY.	WIRE RANGE	REC. TOOL	DIMENSIONS	
				A	B
2A20	100	22-20	ERG2001	.84	.20
RAA24	1,000	22-20		.84	.20
2B-16	100	18-16		.84	.23
RBB25	1,000	18-16		.84	.23
2C-12	50	14-12		.90	.28
RCC26	500	14-12	.90	.28	

Sta-Kon® Parallel Splices



CAT. NO.	WIRE RANGE	CIR MIL RANGE	REC. TOOL	LENGTH (A)	O.D. (B)	I.D. (C)	PKG. QTY.
A18-PS-M	22-16 AWG	509-3,260	ERG2002	0.314	0.129	0.086	1,000
B14-PS-M	16-14 AWG	2,050-5,180		0.315	0.155	0.113	1,000
C10-PS-D	12-10 AWG	5,180-13,100		0.380	0.220	0.170	500
D8-PS-D	8 AWG	13,100-20,800	WT115A	0.375	0.260	0.180	500
E6-PS-D	6 AWG	20,800-33,100		0.500	0.365	0.266	500
F4-PS-W	4 AWG	33,100-52,600		0.531	0.410	0.302	250
G2-PS-W	2 AWG	52,600-83,700		0.640	0.521	0.396	250
H1/0-PS-C	1/0 AWG	83,700-119,500	TBM87501	0.750	0.571	0.446	100
J2/0-PS-C	2/0 AWG	119,500-150,500		0.750	0.632	0.507	100
K3/0-PS-L	3/0 AWG	150,500-190,000		0.750	0.701	0.564	50
L4/0-PS-L	4/0 AWG	190,000-231,100		0.770	0.766	0.629	50
M250-PS-Q	250 MCM	231,100-300,000		1.063	0.926	0.749	25
N300-PS-X	300 MCM	300,000-380,000		1.125	1.100	0.882	10
P400-PS-X	400 MCM	380,000-478,000		1.250	1.200	0.956	10
R500-PS-V	500 MCM	478,000-600,000		1.438	1.330	1.060	5

The total combined cross sectional area of all wires must be within the CMA range.